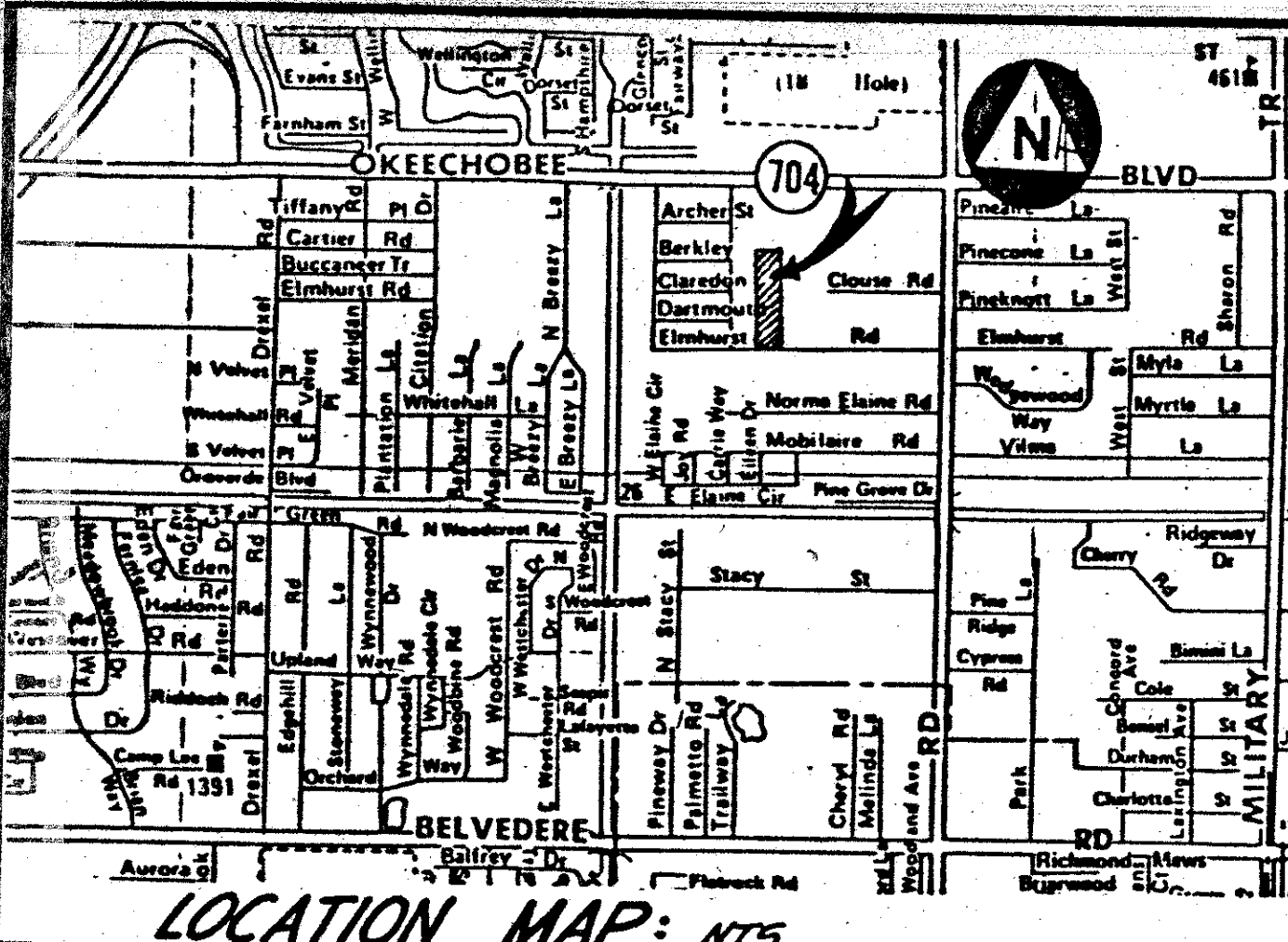


45/130



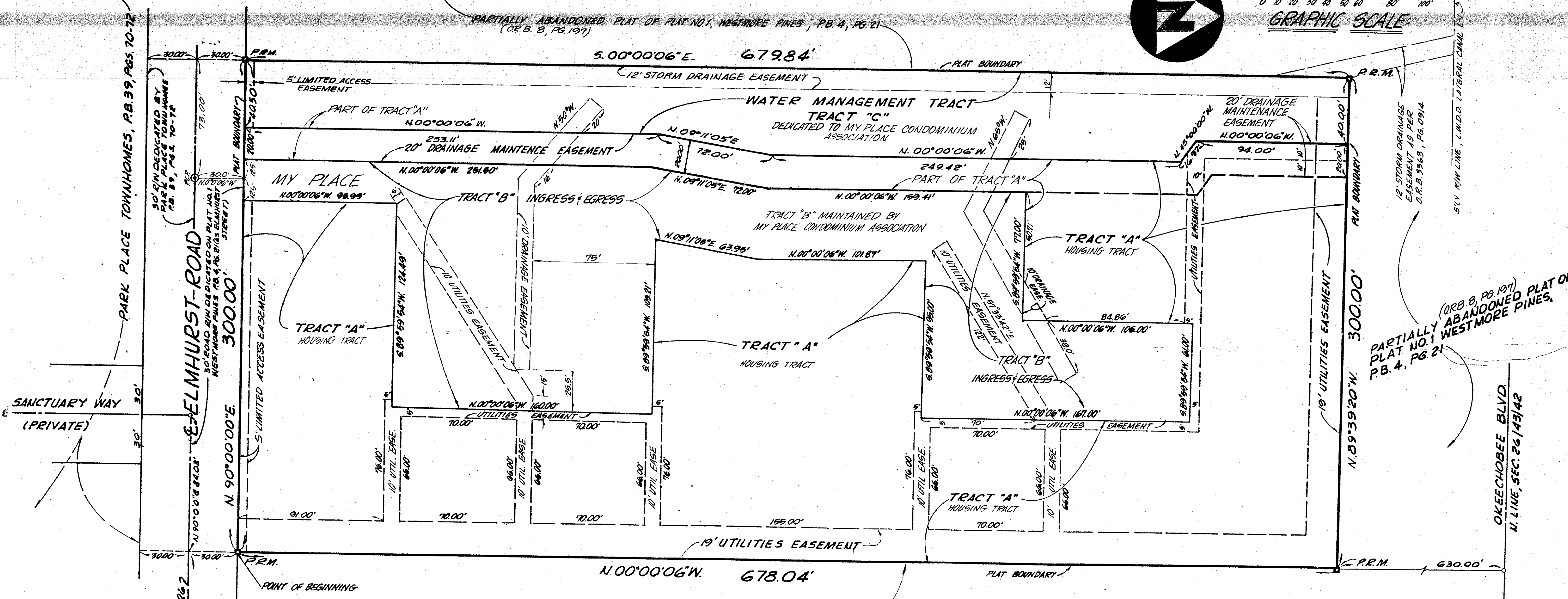
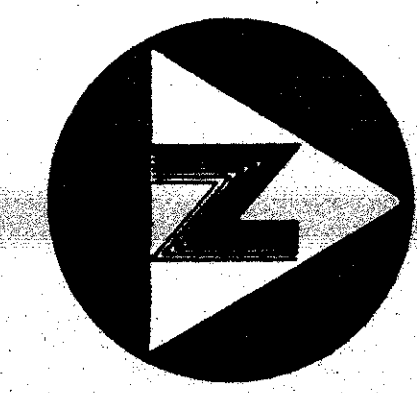
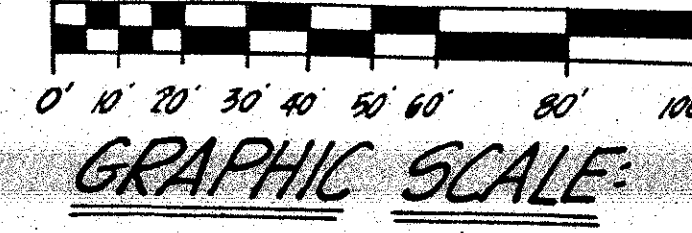
# BOARDWALK

LYING IN SECTION 26, TOWNSHIP 43 SOUTH, RANGE 42 EAST,  
PALM BEACH COUNTY, FLORIDA

DECEMBER, 1982

130

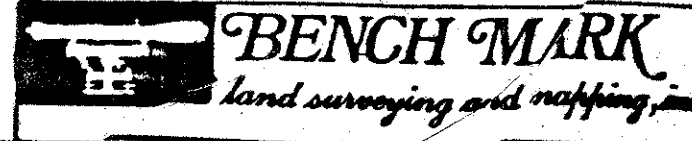
STATE OF FLORIDA  
COUNTY OF PALM BEACH  
THIS PLAT WAS FILED FOR  
RECORD AT  
THIS DAY OF  
AD. AND DULY RECORDED  
IN PLAT BOOK ON PAGES  
AND  
JOHN B. DUNKLE, CLERK  
CIRCUIT COURT  
BY: DC



PARTIALLY ABANDONED PLAT  
OF PLAT NO. 1 WESTMORE PINES,  
P.B. 4, PG. 21 (O.R.B. 8, PG. 197- ABANDONMENT)

(O.R.B. 8, PG. 197)  
PARTIALLY ABANDONED PLAT OF  
PLAT NO. 1 WESTMORE PINES,  
P.B. 4, PG. 21

0202-001



CONRAC W. SCHAEFER CONSULTING ENGINEERS, INC. PALM BEACH COUNTY, FLORIDA			
<b>BOARDWALK RECORD PLAT</b>			
DESIGNED TLO	DRAWN BAKE	CHECKED WVC	DATE 1-30
SCALE 1"=30'	APPROVED	FILE NO.	SHEET 2 OF 2

45  
43/130